

# Jamboree<sup>®</sup> 1994

BY FLEETWOOD.



Jamboree Searcher

Jamboree

A New Generation  
of Adventure In The Great Outdoors

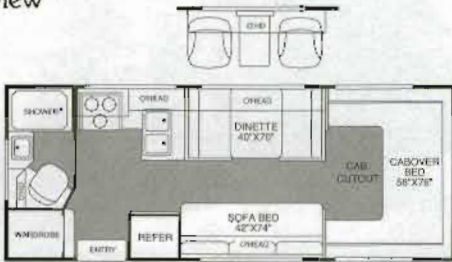


18A



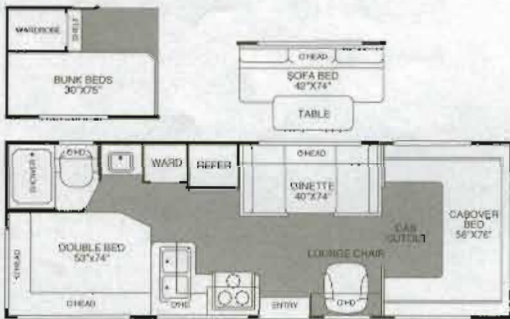
- Big features packed into a small package including a new larger ward & pantry
- Fits in a single parking space
- Easy drivability and maneuverability
- Great visibility, rear dinette windows provide full view

21C



- Full living room seating with dinette and sofa, or sofa and chairs
- Large rear bathroom and wardrobe
- Easy to maneuver, fits in a single parking space
- Optional lounge chairs w/cantilever table, pedestal table

23D



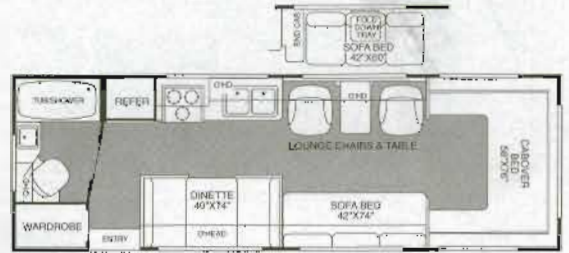
- Residential double bed accommodations
- Sleeps up to six in only 23'
- Open feeling with large windows on doorside of coach
- Optional bunkbeds, sofa bed

23P



- Versatile, open floorplan can seat up to 11 people at campsite
- Rear lounge provides comfortable living area with full visibility – great for towing
- Rear lounge converts to a 90" bed for taller campers

26J



- Lots of room in a compact floorplan
- Cabover queen bed, sofa, chair, fully equipped galley and dinette
- Large bath and wardrobe
- Optional compact sofa bed

27V

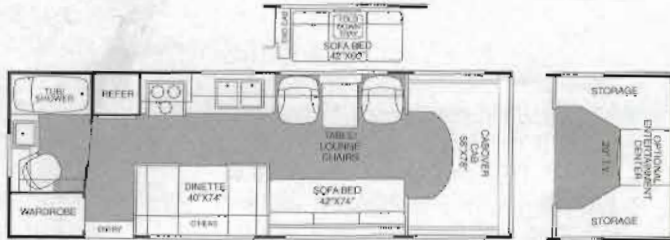


- Center aisle versatility featuring full living room, full bedroom, split bath with rear door for full privacy
- A full range of furniture options available
- Large L-shaped galley with easy access to the aisle
- Optional sofa bed, twin beds, compact sofa bed, double bunk

29Z

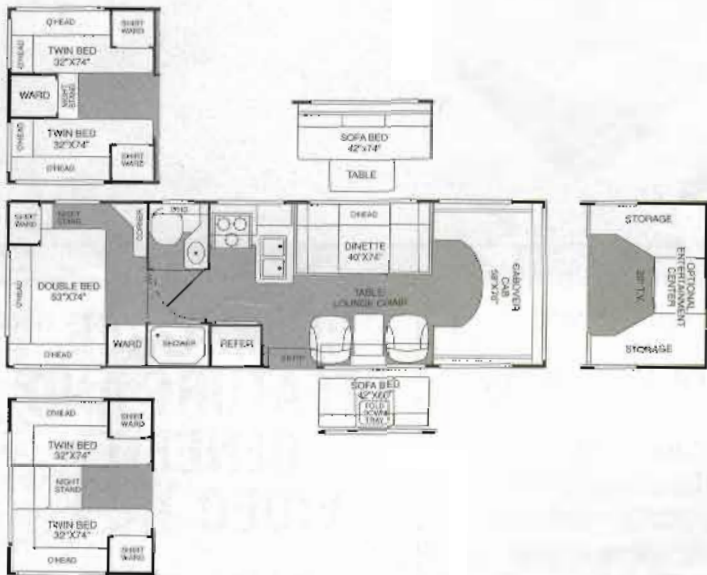


- Features a full living room and island queen bed stateroom
- Built-in dinette and table with lounge chairs
- Split bath with rear door for full privacy
- Optional double bed with vanity provides unparalleled storage
- Optional sofa bed, compact sofa bed



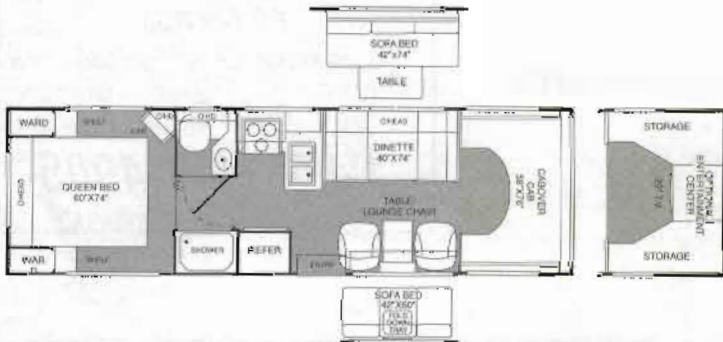
### 27J

- 34' livability in just 27'
- Cabover queen bed, sofa & chairs, fully equipped galley and dinette
- Large bath and wardrobe
- Optional compact sofa bed with end table, entertainment center with 20" TV monitor, VCR and storage



### 28V

- Center aisle versatility featuring full living room, full bedroom, split bath with rear door for full privacy
- A full range of furniture options available
- Large L-shaped galley with easy access to the aisle
- Optional sofa bed, twin beds, compact sofa bed, entertainment center with 20" TV monitor, VCR and storage



### 29Z

- Full living room and island queen bed stateroom
- Split bath with rear door for full privacy
- Angled galley with double bowl sink and view window
- Optional sofa bed, compact sofa bed, entertainment center with 20" TV monitor, VCR and storage



# Jamboree® Features

## Automotive

Power Steering  
Rear Anti-Lock Brakes  
Automatic Transmission w/Overdrive  
Factory Cruise Control & Tilt Wheel  
Factory Cab Air Conditioner  
Ford Shoulder Harness Seat Belts  
Kustom Fit® Reclining Captain's Chairs  
Radio AM/FM/MX Cassette  
(Ford Premium Sound System)  
Auxiliary Start Circuit  
Exclusive Fleetwood Designed  
Rearview Mirrors  
Chrome Front Bumper, Flexible Rear  
Bumper Fascia w/Impact Beam  
Full Wheel Covers  
Molded ABS Wheel Well Trim  
Contoured Running Boards and  
Courtesy Step Light  
Mud Flaps  
Automotive Safety Dash  
Padded Cab Door Panels

## Construction

Vacubonded Steel Cage Floor,  
Sidewalls, Rear Wall & Ceiling  
All Filon® Fiberglass Exterior  
w/10-Year Warranty  
One-Piece Fiberglass Rear Cap  
Aerodynamically Shaped Fiberglass  
Front Cap and Cab Panels  
Undercoated Metal Underbelly  
One-Piece Domed Rubber Roof  
Awning Rail  
Floor Mounted LP Tank  
Large Tinted/Slider View & Torque  
Windows

## Exterior

Molded Polyethylene Wheel Wells  
Cable TV Hook-Up & TV Antenna

Not all models include all features. See your dealer for details.

Roof Mounted Radio Antenna  
Exterior Shower w/Water Pump Switch  
Lockable Slide-Out Storage Drawers  
Radiused Entry Door w/Clear Glass  
Exterior Courtesy Lights on Rear,  
Side and Entry  
Insulated Radiused Luggage Doors  
Locking and Lighted Exterior Storage  
Compartments  
Removable Two-Piece Ladder System  
Lockable Power Cord Door  
Color Coordinated Exterior Graphics

## Interior

Brand Name Appliances Throughout  
Hydroflame® Furnace  
6 Gallon DSI Water Heater  
Sealy® Innerspring Mattress—Fixed Beds  
Designer Bed Comforter  
w/Pillow Shams  
Monsanto WEAR-DATED® Fabrics  
Scotchgard® Fabric Protector  
Velvet Feature Fabrics  
Upgraded Carpet with Pad  
Patented Queen Size Cabover Slider Bunk  
w/Ladder Attachment  
Solid Oak Cabinet Doors w/Mortise &  
Tenon Construction  
Wilsonart® High Impact Designer  
Laminates  
Window Lambrequins and Color-  
Coordinated Mini-Blinds  
Battery Operated Wall Clock  
7' of Headroom  
Fire Extinguisher & Smoke Detector  
CO Detector  
LPG Leak Detector with Automatic  
Shut-Off

## Electrical

120V/12V Power Center, 45 Amp  
Converter w/Charger

GFI Patio 110V Receptacle  
RV Systems Monitor Panel  
Range Hood with Light & Fan  
12V Lighting  
Auxiliary Battery  
(In Engine Compartment)  
Auxiliary Battery Disconnect  
Generator Ready  
Wardrobe Light w/Auto Switch  
12V Demand Water Pump w/Multi-  
Switch Controls  
30 Foot Power Cord

## Galley

Dometic® Double Door LP/Electric  
Refrigerator  
Magic Chef® High Output 3-Burner Range  
and Large Oven  
Microwave Ready  
Wood Drawers w/Travel Locks and  
Dual Metal Roller Guides  
Double Bowl Porcelain Sink w/ Sliding  
Cover

## Bath

ABS Tub/Shower Enclosure  
Built-In Shower Caddy & Water Saver  
Shower Head  
Towel Rack on Bath Door  
Double Pedestal Thetford® Toilet  
12V Power Bath Vent  
Auxiliary Water Pump Switch

### Popular Available Options

- Fantastic Fan®
- Coleman® roof air conditioner w/thermostat
- Onan® MicroLite generator
- Stainless steel wheel simulators
- Kwikkee® electric entry step
- Large Obl. door Dometic® refrigerator
- Draw Tite® Class II hitch
- Magic Chef® microwave
- Black and Decker® coffee maker
- TV & VCR (Panasonic®)
- Front entertainment center w/20" TV, VCR and storage
- Spare tire and carrier
- Roof air w/solar panel charger
- Water heater bypass valve

# Jamboree® SPECIFICATIONS

CHASSIS – Ford®	27J	28V	29Z
Engine – V8 CID/lters	460/7.5	460/7.5	460/7.5
4-Speed Overdrive Transmission	•	•	•
Wheelbase – inches	190	190	190
GVWR <sup>1</sup> – pounds	12,400	12,400	12,400
Front GAWR <sup>2</sup> – pounds	4,600	4,600	4,600
Rear GAWR <sup>2</sup> – pounds	7,810	7,810	7,810
GCWR <sup>3</sup> – pounds	15,900	15,900	15,900
Fuel Tank – gallons <sup>4</sup>	55	55	55
<b>LIQUID CAPACITIES – Gallons<sup>5</sup></b>			
Auto Ignition Water Heater	6	6	6
Fresh Water System	35	35	35
Gray Water Tank	30	32	32
Waste Tank	25	35	35
Appliance LP Tank <sup>5</sup>	14	14	14
Forced Air Furnace – BTUs	31M	31M	31M

DIMENSIONS	27J	28V	29Z
Overall Length	27'2"	28'7"	29'10"
Overall Height – inches, maximum w/optional A/C	128	128	128
Overall Width – inches, maximum	94	94	94
Interior Height – inches, maximum	85	85	85
Interior Width – inches, maximum	90	90	90

<sup>1</sup>GVWR – Gross Vehicle Weight Rating: the value specified by the manufacturer as the maximum loaded weight of a single vehicle (NHTSA)

<sup>2</sup>GAWR – Gross Axle Weight Rating

<sup>3</sup>GCWR – Gross Combined Weight Rating: the maximum combined weight of the fully-equipped motor home (including passengers, all cargo, fluids, etc.) PLUS the weight of any fully-loaded towed vehicle.

<sup>4</sup>All capacities are approximate.

<sup>5</sup>For filling, fuel should not exceed 80% of tank capacity (11.2 gallons).

Product information and photography in this brochure were as accurate as possible at the time of publication. Subsequent refinements may be evident in the actual product. Prices and specifications are

subject to change without notice. All fuel and liquid capacities are approximate and dimensions are nominal.

Fleetwood has designed its motor home brands to provide a variety of potential uses for its customers. Each unit features the optimum storage, fluid, seating and sleeping capabilities.

While the customer enjoys this potential, he also has the responsibility to select the proper combinations of loads without exceeding the chassis weight capacities. To assist you in this selection, each motor home has posted inside the wardrobe a weight calculation form stating actual unit weight with factory installed options.



## Features & Specifications

### Automotive

Power Steering  
Rear Anti-Lock Brakes  
Automatic Transmission w/Overdrive  
Ford Factory Cruise Control & Tilt Wheel  
Ford Factory Cab Air Conditioner  
Auxiliary Start Circuit  
Radio AM/FM/MX Cassette  
(Ford Premium Sound System)  
Kustom Fit<sup>®</sup> Captain's Chair  
Double Swivel Sun Visors  
Full Wheel Covers  
Automotive Safety Dash  
Ford Shoulder Harness Seat Belts  
Exclusive Fleetwood Designed  
Rearview Mirrors  
Mud Flaps  
Fleetwood Designed Steel Running Boards

### Construction

All Filon<sup>®</sup> Fiberglass Exterior  
w/10-Year Warranty  
Vacubonded Steel Cage Floor,  
Sidewalls, Rear Wall & Ceiling  
Undercoated Metal Underbelly  
One-Piece Rubber Roof  
Awning Rail  
Floor Mounted LP Tank  
Large View & Slider Windows

### Exterior

Molded Polyethylene Wheel Wells  
Cable TV Hook-Up & TV Antenna

*Not all models include all features. See your dealer for details.*

Roof Mounted Radio Antenna  
Sewer Hose Storage Compartment  
Roof Ladder  
Lockable Storage Compartments  
Powdercoated Steel Rear Bumper  
Color Coordinated Exterior Graphics

### Interior

Hydroflame<sup>®</sup> Furnace  
6 Gal. DSI Water Heater  
Monsanto WEAR-DATED<sup>®</sup> Fabrics  
Scotchguard<sup>®</sup> Fabric Protector  
Velvet Feature Fabrics  
Wall to Wall Carpet with Pad  
Patented Queen Size Cabover Slider Bunk  
Designer Bedspread w/Pillow Shams  
Wilsonart<sup>®</sup> High Impact Designer Laminates  
6' 11" Ceiling Height  
Laminated Roller Shades  
Fire Extinguisher & Smoke Detector  
CO Detector  
LPG Leak Detector with Automatic  
Shut-off

### Electrical

120V/12V Power Center, 45 Amp  
Converter w/Charger  
GFI Patio 110V Receptacle  
RV Systems Monitor Panel  
Range Hood with Light & Fan  
12V Lighting  
Auxiliary Battery (In Engine Compt. - Ford)  
Generator Ready

12V Demand Water Pump w/ Multi-Switch Controls  
30 Foot Power Cord

### Galley

Dometic<sup>®</sup> Double Door LP/Electric Refrigerator  
Magic Chef<sup>®</sup> High Output 3-Burner Range and Oven  
Microwave Ready  
Wood Drawer Construction w/Dual Metal Roller Guides  
Double Bowl Porcelain Sink

### Bath

Dbl. Pedestal Thetford<sup>®</sup> Marine Toilet  
Molded Shower Pan  
12V Power Bath Vent  
Water Saver Shower Head  
Auxiliary Water Pump Switch  
Towel Rack on Bath Door

### Fleetwood Extras

Fully Transferable One-Year Ownercare Warranty

### Popular Available Options

- Fantastic Fan<sup>®</sup>
- Coleman<sup>®</sup> roof air conditioner
- Onan<sup>®</sup> MicroLite generators
- Draw Tite<sup>®</sup> Class II hitch
- Magic Chef<sup>®</sup> microwave
- Spare tire and carrier
- Sealy<sup>®</sup> innerspring mattresses
- Bunk ladder
- Roof air w/solar panel charger
- Exterior Shower
- TV & VCR (Panasonic<sup>®</sup>)
- Black & Decker<sup>®</sup> coffee maker
- Dbl. door Dometic<sup>®</sup> refrigerator
- 31M BTU Furnace
- Reclining Bucket Seats
- Floor Mats
- Sink Lid
- Water heater bypass valve

CHASSIS - Chevrolet <sup>®</sup> /GMC <sup>®</sup>	18A	21C	23D	23P	26J	27V	29Z
Engine - V8 CID/liters	-	454/7.4 <sup>1</sup>	454/7.4 <sup>1</sup>	454/7.4 <sup>1</sup>	-	-	-
4-Speed Overdrive Transmission	-	•	•	•	-	-	-
Wheelbase - inches	-	125	146	146	-	-	-
GVWR <sup>2</sup> - pounds	-	10,200	10,500	10,500	-	-	-
Front GAWR <sup>3</sup> - pounds	-	3,900	3,900	3,900	-	-	-
Rear GAWR <sup>3</sup> - pounds	-	7,200	7,200	7,200	-	-	-
GCWR <sup>4</sup> - pounds	-	13,700	14,000	14,000	-	-	-
Fuel Tank - gallons <sup>5</sup>	-	33	33	33	-	-	-

CHASSIS - Ford <sup>®</sup>	460/7.5 <sup>6</sup>	460/7.5 <sup>6</sup>	460/7.5 <sup>6</sup>	460/7.5 <sup>6</sup>	460/7.5 <sup>6</sup>	460/7.5 <sup>6</sup>	460/7.5 <sup>6</sup>
Engine - V8 CID/liters	460/7.5 <sup>6</sup>	460/7.5 <sup>6</sup>	460/7.5 <sup>6</sup>	460/7.5 <sup>6</sup>	460/7.5 <sup>6</sup>	460/7.5 <sup>6</sup>	460/7.5 <sup>6</sup>
4-Speed Overdrive Transmission	•	•	•	•	•	•	•
Wheelbase - inches	138	138	158	158	190	190	190
GVWR <sup>2</sup> - pounds	10,500	10,500	12,400	12,400	12,400	12,400	12,400
Front GAWR <sup>3</sup> - pounds	3,850	3,850	4,600	4,600	4,600	4,600	4,600
Rear GAWR <sup>3</sup> - pounds	7,480	7,480	7,810	7,810	7,810	7,810	7,810
GCWR <sup>4</sup> - pounds	14,000	14,000	15,900	15,900	15,900	15,900	15,900
Fuel Tank - gallons <sup>5</sup>	36	36	55	55	55	55	55

LIQUID CAPACITIES - Gallons <sup>5</sup>	18A	21C	23D	23P	26J	27V	29Z
Auto Ignition Water Heater	6	6	6	6	6	6	6
Fresh Water System	26	30	37	30	35	35	35
Gray Water Tank	23	30	30	30	30	32	32
Waste Tank	22	25	30	23	25	35	35
Appliance LP Tank <sup>7</sup>	10	14	14	14	14	14	14
Forced Air Furnace - BTUs	20M	20M	20M	20M	20M	20M	20M

DIMENSIONS	18A	21C	23D	23P	26J	27V	29Z
Overall Length	19'4"	21'5" <sup>8</sup>	23'11" <sup>8</sup>	24'6"	26'3"	27'9"	29'0"
Overall Height - inches, max. <sup>9</sup>	120	120	120	120	120	120	120
Overall Width - inches, max.	94	94	94	94	94	94	94
Interior Height - inches, max.	83	83	83	83	83	83	83
Interior Width - inches, max.	90	90	90	90	90	90	90

<sup>1</sup>350 CID/5.7L engine also available (subtract 166 lbs. from UVW, 200 lbs. from GCWR).

<sup>2</sup>GVWR - Gross Vehicle Weight Rating: the value specified by the manufacturer as the maximum loaded weight of a single vehicle (NHTSA)

<sup>3</sup>GAWR - Gross Axle Weight Rating.

<sup>4</sup>GCWR - Gross Combined Weight Rating: the maximum combined weight of the fully-equipped motor home including passengers, all cargo, fluids, etc., PLUS the weight of any fully-loaded towed vehicle.

<sup>5</sup>All capacities are approximate.

<sup>6</sup>351 CID/5.7L engine also available (subtract 240 lbs. from UVW, 250 lbs. from GCWR).

<sup>7</sup>For filling, fuel should not exceed 80% of tank capacity (11.1 gallons - 8 gallons on model A18).

<sup>8</sup>Add 10' to overall length for Ford chassis.

<sup>9</sup>With optional roof air conditioner, overall height is 127".

Product information and photography in this brochure were as accurate as possible at the time of publication. Subsequent refinements may be evident in the actual product. Prices and specifications are subject to change without notice. All fuel and liquid capacities are approximate and dimensions are nominal.

Fleetwood has designed its motor home brands to provide a variety of potential uses for its customers. Each unit features the optimum storage, fluid, seating and sleeping capabilities.

While the customer enjoys this potential, he also has the responsibility to select the proper combinations of loads without exceeding the chassis weight capacities. To assist you in this selection, each motor home has posted inside the wardrobe a weight calculation form stating actual unit weight with factory installed options.



# Jamboree Construction



## Steel Frame Construction

Electrically welded for strength, durability and safety.



## Vacubond Roof

Five piece construction assuring structural integrity. 1. Interior ceiling panel (soft acoustic ceiling in Jamboree) 2. Block foam insulation 3. Rigid backing panel 4. Seamless rubber roof – white finish to reflect sun, heat. 5. Welded steel framework – all laminated for strength

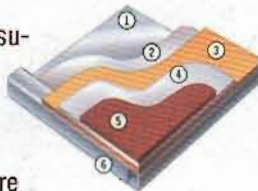
## Vacubond Walls

Five piece construction for strength, durability, quiet ride 1. Filon® Fiberglass panel w/10 Year Warranty 2. Rigid backing panel 3. 1 1/2" Block foam insulation 4. Welded tubular steel frame 5. Interior wall panel – all laminated for strength.

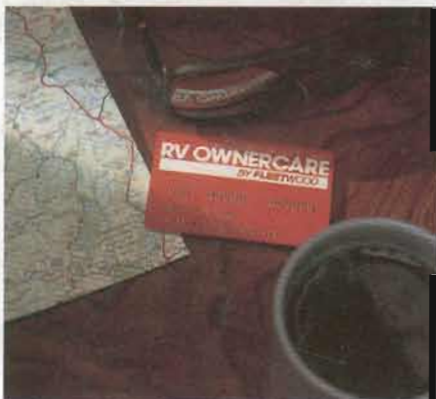


## Vacubond Floor

1. Metal outer skin 2. Block foam insulation 3. Exterior grade plywood decking 4. Insulating carpet pad 5. Carpet 6. Welded steel framework. All construction components are laminated for strength and feature Quakercoat® undercoating.



## Full One-Year/15,000 Mile Ownercare Warranty



Fleetwood's Ownercare program is more than just a little orange card – it's one of the most comprehensive manufacturer-backed warranty and service programs in the industry. The Ownercare program is Fleetwood's commitment to owner satisfaction and the long haul.

See your dealer for complete details.

## JAMBOREE FEATURE AND BENEFIT VIDEO TAPE

available for only \$9.95  
(\$10.73 with tax in CA), write to:

**FLEETWOOD VIDEO OFFER**

P.O. Box 7638

Riverside, CA 92513-7638

Or, call toll free

**1-800-444-4905**

Your local Jamboree dealer is:

**MIKE DAUGHERTY CHEVROLET R.V. CENTER**  
2400 FULTON AVE.  
SACRAMENTO, CA 95825  
(916) 482-1600

**BY FLEETWOOD®**  
Quality Above All

**FLEETWOOD ENTERPRISES, INC.**

P.O. Box 7638

Riverside, California 92513-7638

Attn: RV Marketing